

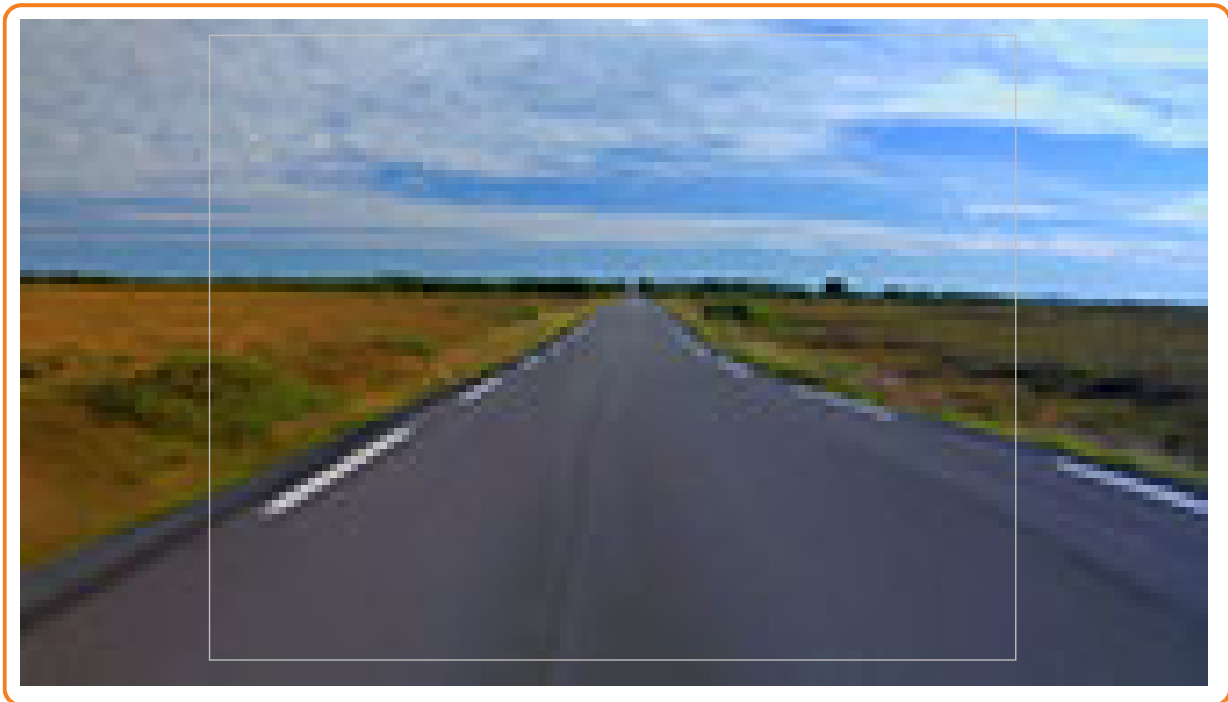


SLIDE 1

1

PARCC YEAR TWO

edtech



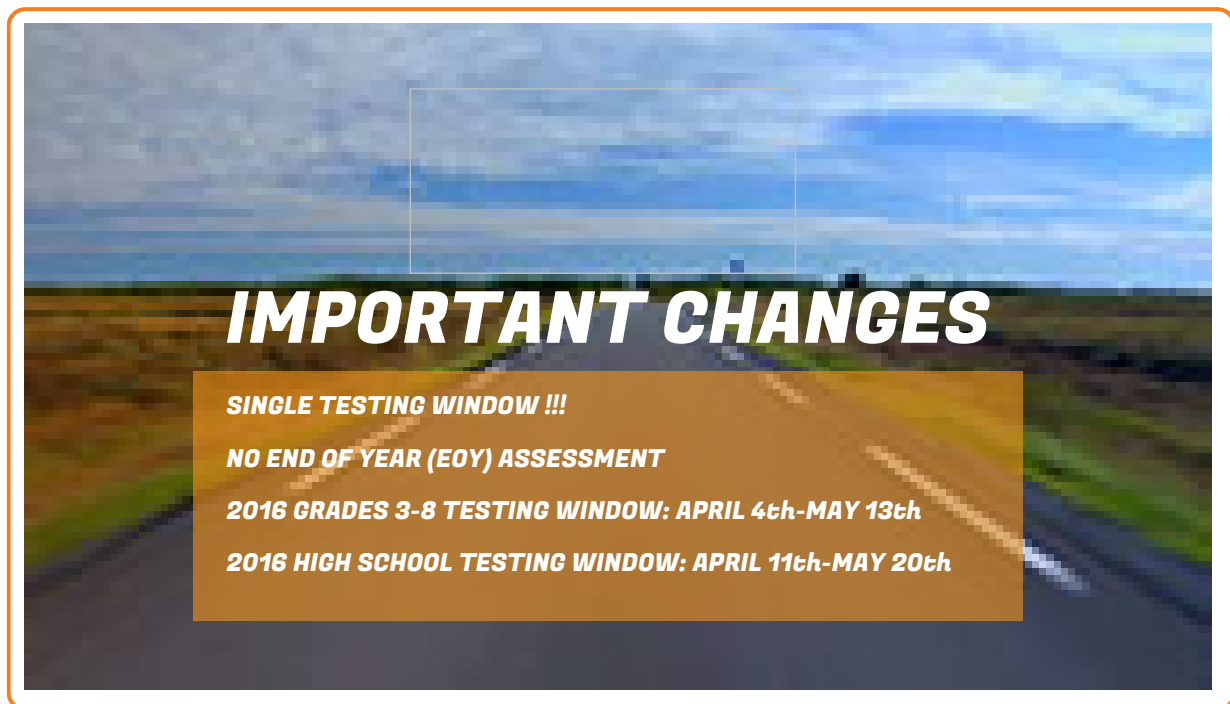
SLIDE 2

2

IMPORTANT DATES

- January Report to BOE
- December Faculty Meetings
Teacher Training
- December Score Reports Mailed Home
- November 18 Results Delivered
- November 19-December 15 In-District Score Analysis

SLIDE 3



IMPORTANT CHANGES

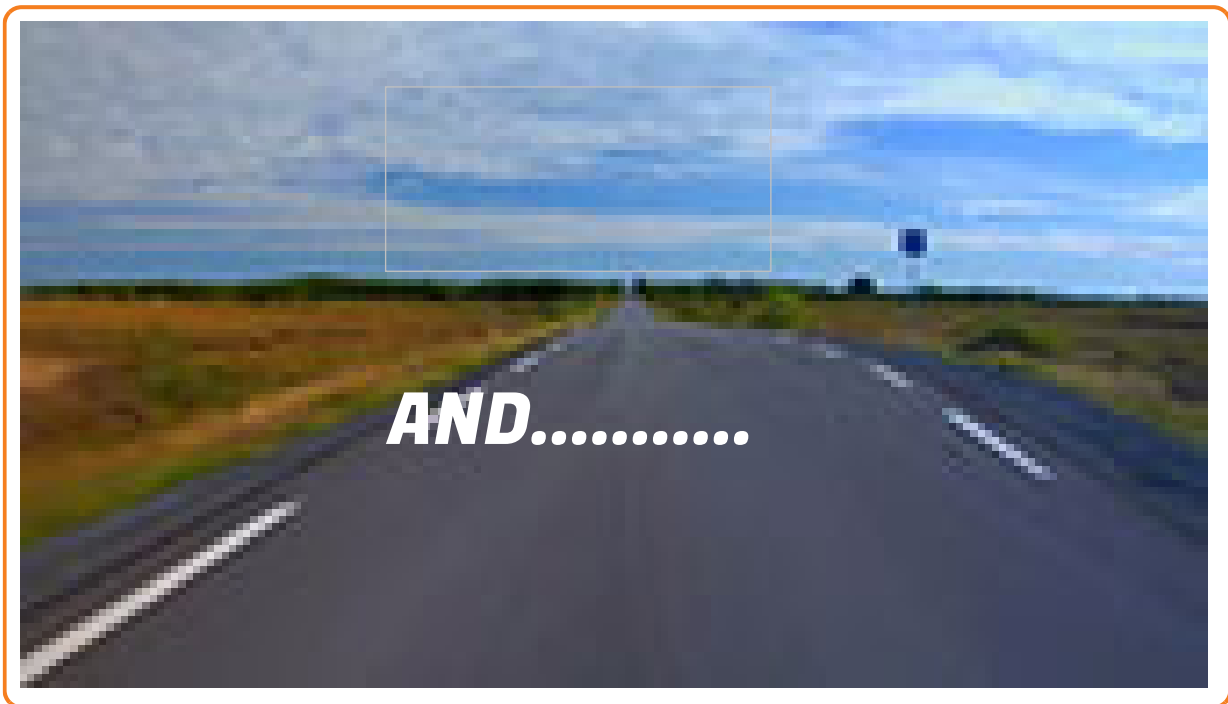
SINGLE TESTING WINDOW !!!

NO END OF YEAR (EOY) ASSESSMENT

2016 GRADES 3-8 TESTING WINDOW: APRIL 4th-MAY 13th

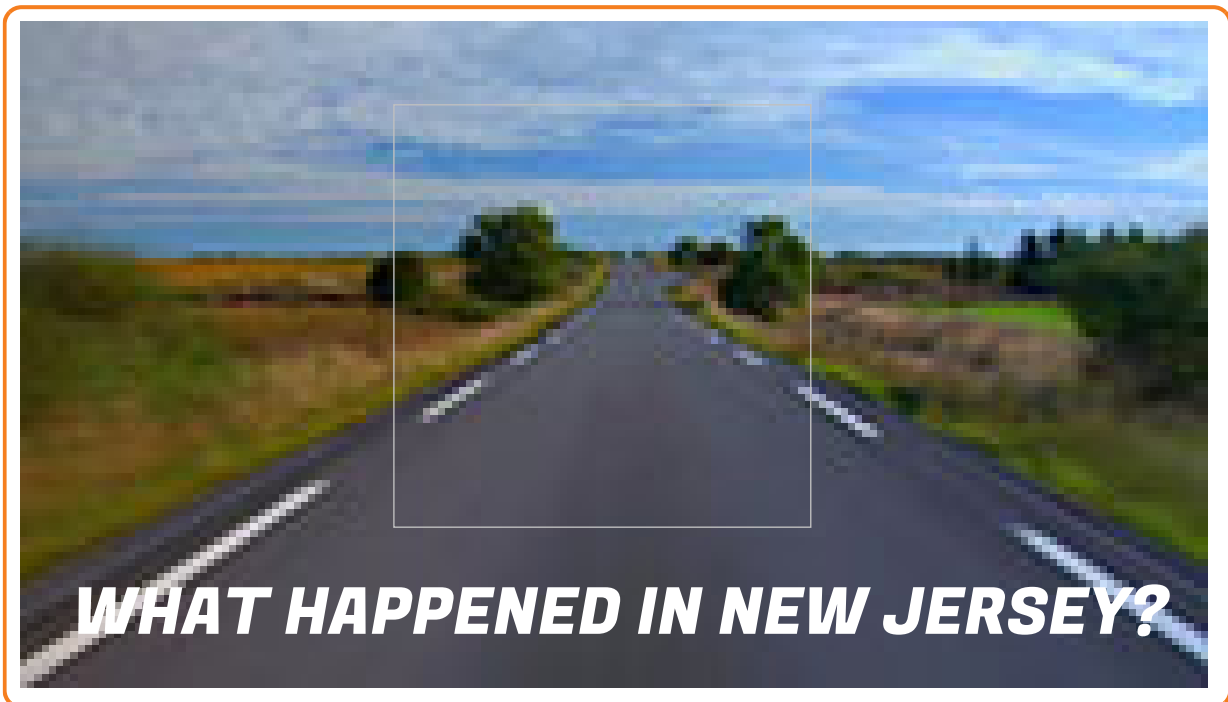
2016 HIGH SCHOOL TESTING WINDOW: APRIL 11th-MAY 20th

PARCC YEAR TWO
edtech



The table is overlaid on a background image of a road stretching into the distance under a blue sky. The title 'IMPACTED INSTRUCTIONAL DAYS' is in large white letters, with the subtitle 'ESTIMATED ON PRELIMINARY SCHEDULE' in smaller white letters below it. The table has three columns: '2015', '2016', and 'Reduction'. The rows are labeled 'ES', 'MS', and 'HS' on the left side of each row.

	2015	2016	Reduction
ES	26	14	12
MS	30	18	12
HS	15	15	0

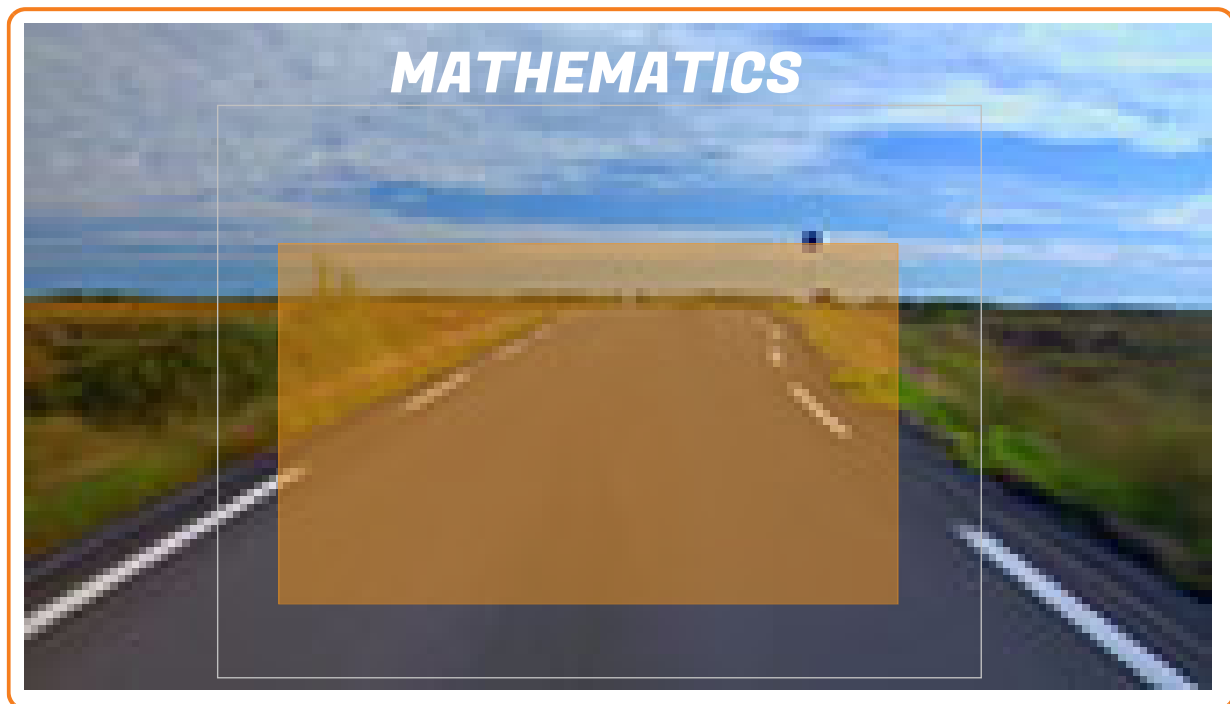


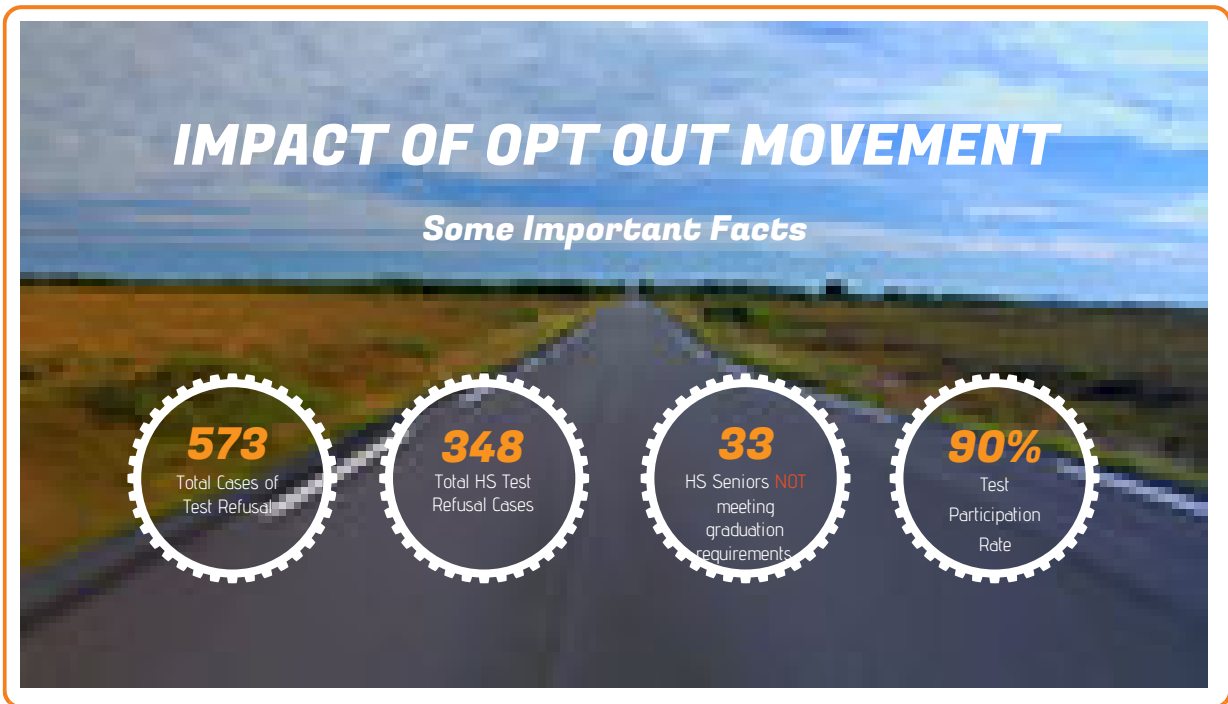
SLIDE 7

7



SLIDE 8





SLIDE 10

