

# Wayne Township Public School Educational Technology Update

---

JOE BORCHARD

# Department

---

## **Student Data Processing**

Paulette Collins- Webmaster

Mary Castillo- Systems Admin

Christine Langille- Data Specialists

Jyh-Woei Shiue- Systems Programmer

## **Educational Technology**

John Celentano- Lead Tech

Sue Fioravanti- Network Admin

Tracy Leigh- Ed. Tech Integration

Nick Polise- Network Engineer

Denise Valvano- Admin Assistant

Aaron Palmer- Technician

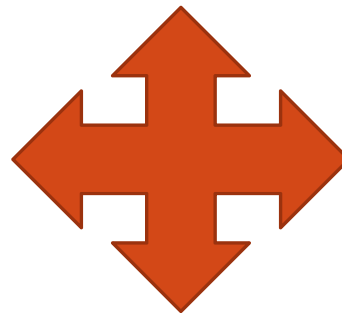
Bill Schmid- Technician

Scott Sellitto- Technician

Jason Suter- Technician

# Instructional to Tie Data & Technology

---



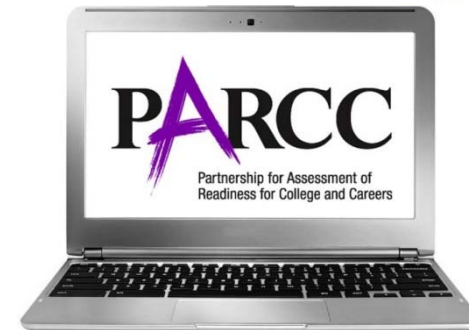
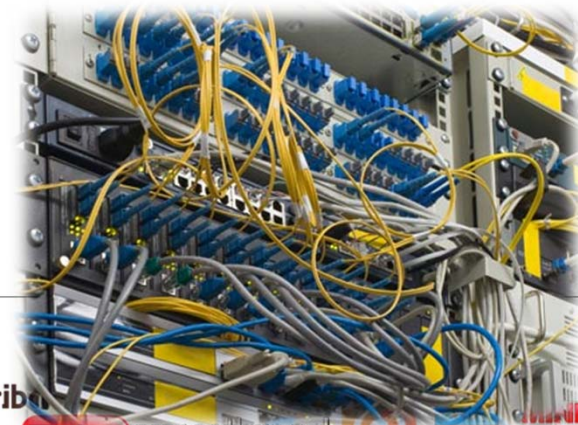
# Overview

---

Infrastructure

Instructional

PARCC



# Infrastructure

---

Wireless update

Devices

Network Security & Monitoring

& Maintenance



# Wireless update

---

Year 3 of a 5 year plan

All Middle and High Schools are fully Wi-Fi

200 + access points hung summer 2014

Elementary schools have some coverage fully Wi-Fi by 2015/2016 SY

Upgrade bandwidth to 1 GB 2014 (20%) usage



# Infrastructure

---

~~Wireless update~~

Devices

Network Security & Monitoring

& Maintenance



# Devices

---

5-7 year plan to replace obsolete computers

558 Dell desktops

- All elementary teacher machines
- Middle school labs
  
- 636 Samsung Chromebooks
- 17 Epson BrightLink interactive projectors
- New Auditorium screen at Valley HS
- New Projection systems in the auditorium at GW and SC (Winter 15)





# Infrastructure

---

~~Wireless update~~

~~Devices~~

Network Security & Monitoring  
& Maintenance



# Network Security & Monitoring & Maintenance

---

Bring Your Own Device

Average of 1700 Wi-Fi connections daily

Increased network security to enable guest Wi-Fi to not compromise daily network operations.

1642 Help Desk tickets closed

# Overview

---

Infrastructure

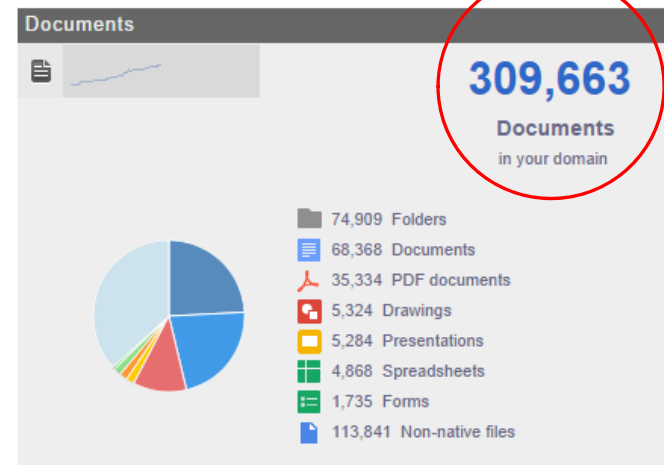
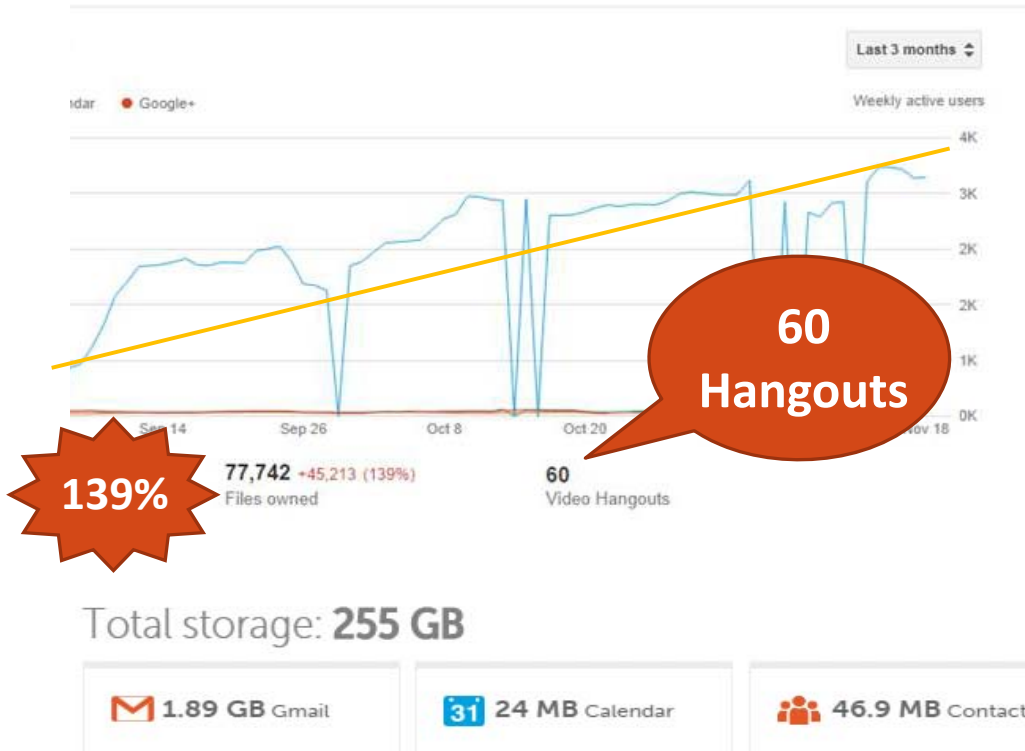
Instructional

PARCC



# What is a GAFE school district?

Create, Collaborate, Curate...



# Instructional

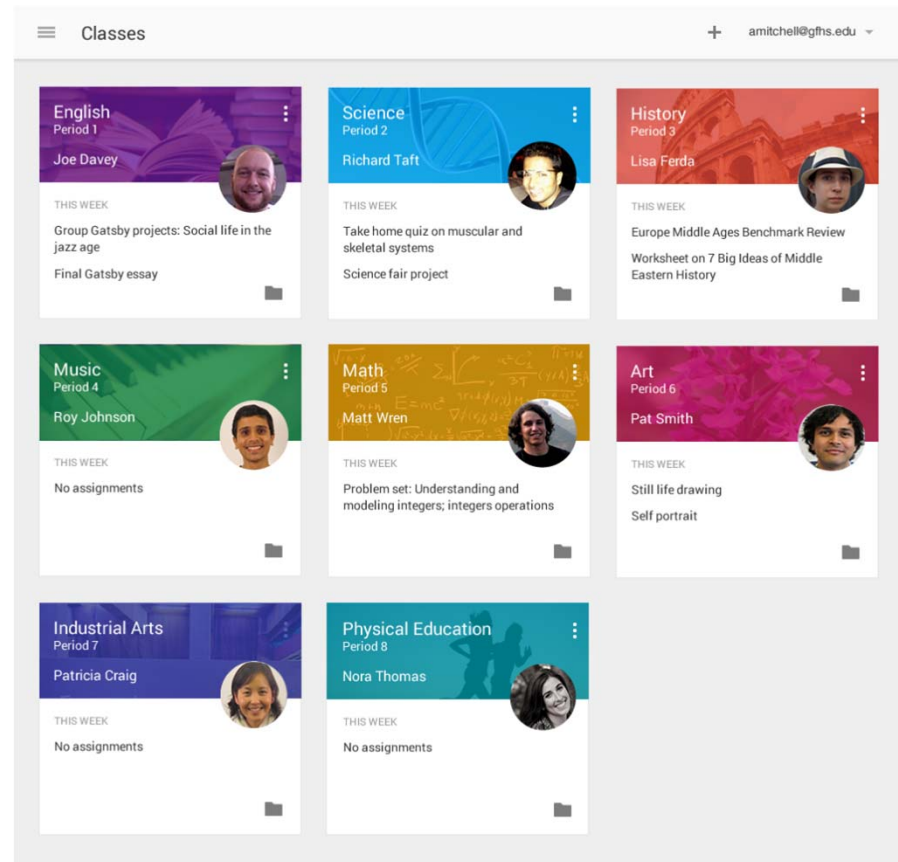
Google Apps for Education

412-Google Classrooms

36,000 visit to Edmodo

OnCourse Lesson Planner

(Since September)



# Chromebooks

---

Low cost laptop

Fast boot up time = more instructional time (avg 8 seconds!)

Collaboration made easy

Easy to maintain

Little down time

Access 24/7



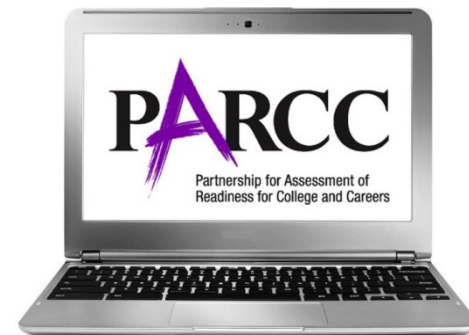
# Overview

---

-Infrastructure

-Instructional

PARCC



# PARCC

---

20 day window to get all 5803 students tested in grades 3-10

16 day assessment – Elementary

15 day assessment – Middle

9 day assessment - HS

Lessons from the field test

- Desktops and Chromebooks worked best

- iPads not best device for PARCC testing

Chromebooks with external mice to level the playing field

Headphones are needed



# Going Forward

---

## Removing Obstacles

Increased use of Instructional Technology accessible to staff and students

Increased opportunities for professional development and in class coaching (WTLC)

Expanded use of OnCourse lesson plans

Increased use of Learning Management Systems to create a blended environment



**KEEP  
CALM  
AND  
KEEP MOVING  
FORWARD**

# Department

---

## **Student Data Processing**

Paulette Collins- Webmaster

Mary Castillo- Systems Admin

Christine Langille- Data Specialists

Jyh-Woei Shiue- Systems Programmer

## **Educational Technology**

John Celentano- Lead Tech

Sue Fioravanti- Network Admin

Tracy Leigh- Ed. Tech Integration

Nick Polise- Network Engineer

Denise Valvano- Admin Assistant

Aaron Palmer- Technician

Bill Schmid- Technician

Scott Sellitto- Technician

Jason Suter- Technician