

Wayne Township Public Schools Annual Report of Student Achievement

Presented on: October 17th, 2013



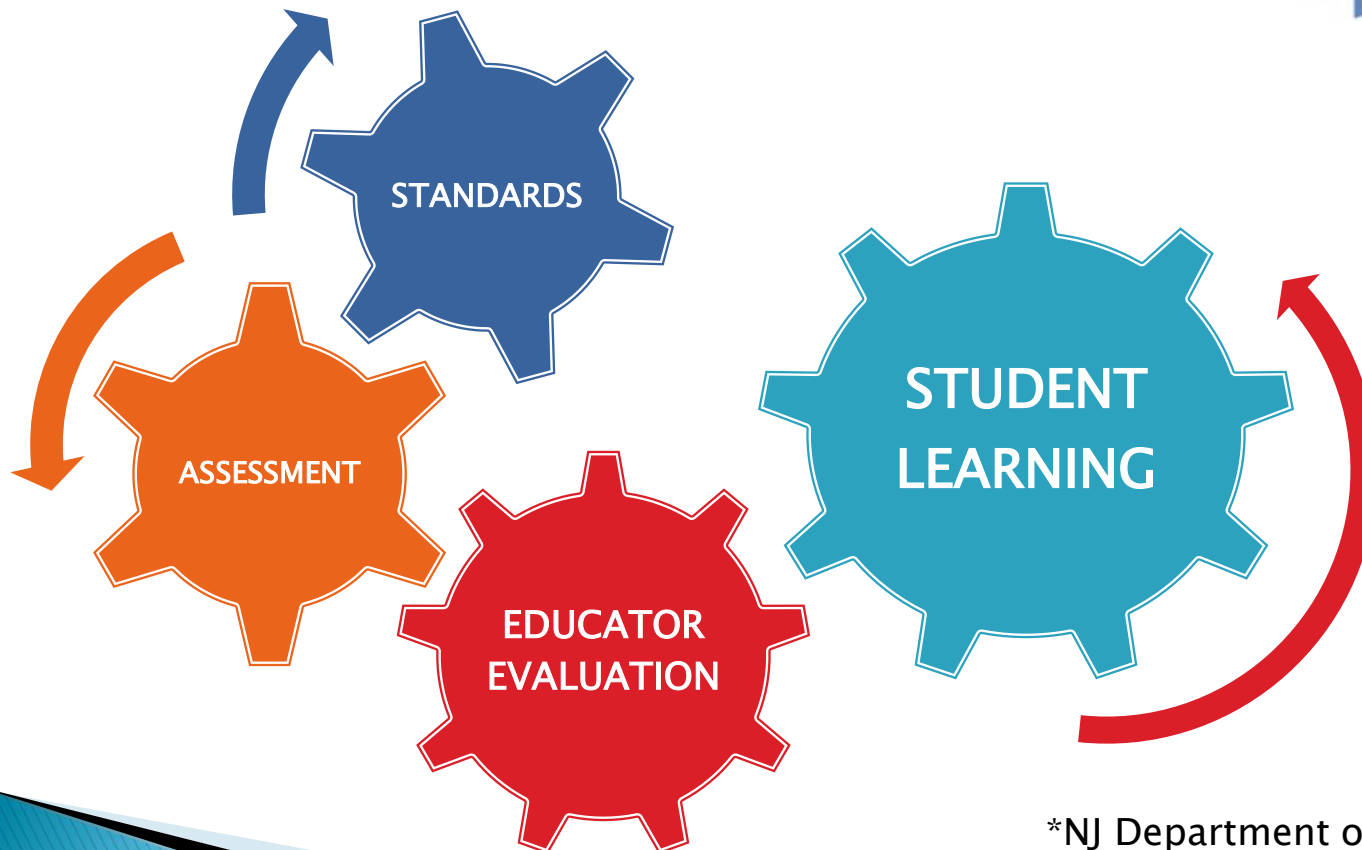
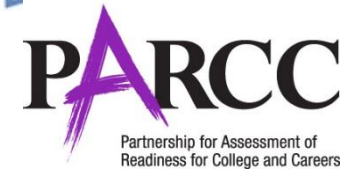
AGENDA

- ❖ **Presentation of District Standardized Assessment Data**
(as required by NJAC 6A:8-3.1)
- ❖ **Data Observations**
- ❖ **Resources**



Shifting Gears*

Working together to support student learning!



*NJ Department of Education
<http://www.state.nj.us/education/sca/>

GOAL #1: STUDENT PERFORMANCE

NJASK 3

			2009-2010	2010-2011	2011-2012	2012-2013
CONTENT	GRADE	DEMOGRAPHIC GROUP	% PROF. & ADV.	% PROF. & ADV.	% PROF. & ADV.	% PROF. & ADV.
LAL	3	TOTAL	66.5	70.4	82.8	70.5
LAL	3	GENERAL EDUCATION	72.8	76.8	87.3	77.2
LAL	3	SPECIAL EDUCATION	46.9	41.8	64.5	46.2
MATH	3	TOTAL	86.8	86.6	91.8	83.5
MATH	3	GENERAL EDUCATION	89.7	93	94.0	86.7
MATH	3	SPECIAL EDUCATION	78.9	62.2	84.2	71.5

GOAL #1: STUDENT PERFORMANCE

NJASK 4

			2009-2010	2010-2011	2011-2012	2012-2013
CONTENT	GRADE	DEMOGRAPHIC GROUP	% PROF. & ADV.	% PROF. & ADV.	% PROF. & ADV.	% PROF. & ADV.
LAL	4	TOTAL	70.4	75.2	69.9	75.2
LAL	4	GENERAL EDUCATION	76.2	82.6	78.6	81.6
LAL	4	SPECIAL EDUCATION	48.5	46.7	34.1	43
MATH	4	TOTAL	86.4	87.2	87.6	89.2
MATH	4	GENERAL EDUCATION	90.8	91.9	93.0	91.8
MATH	4	SPECIAL EDUCATION	68.9	69.4	66.6	78.7

GOAL #1: STUDENT PERFORMANCE

NJASK 4

			2009-2010	2010-2011	2011-2012	2012-2013
CONTENT	GRADE	DEMOGRAPHIC GROUP	% PROF. & ADV.	% PROF. & ADV.	% PROF. & ADV.	% PROF. & ADV.
SCI	4	TOTAL	93.4	96.2	96.0	97
SCI	4	GENERAL EDUCATION	96.1	98.5	99.2	98.3
SCI	4	SPECIAL EDUCATION	84.8	87.3	85.5	92.5

GOAL #1: STUDENT PERFORMANCE

NJASK 5

			2009-2010	2010-2011	2011-2012	2012-2013
CONTENT	GRADE	DEMOGRAPHIC GROUP	% PROF. & ADV.	% PROF. & ADV.	% PROF. & ADV.	% PROF. & ADV.
LAL	5	TOTAL	71.3	69.7	73.1	68.4
LAL	5	GENERAL EDUCATION	78.6	76	80.9	76.8
LAL	5	SPECIAL EDUCATION	38.7	39.8	40.7	30.4
MATH	5	TOTAL	87.9	89.1	91.4	84.4
MATH	5	GENERAL EDUCATION	92.7	94	96.7	92.3
MATH	5	SPECIAL EDUCATION	68.4	67	68.3	50

GOAL #1: STUDENT PERFORMANCE

NJASK 6

			2009-2010	2010-2011	2011-2012	2012-2013
CONTENT	GRADE	DEMOGRAPHIC GROUP	% PROF. & ADV.	% PROF. & ADV.	% PROF. & ADV.	% PROF. & ADV.
LAL	6	TOTAL	75.4	77.5	78.3	77.2
LAL	6	GENERAL EDUCATION	83.1	83.4	85.1	85.5
LAL	6	SPECIAL EDUCATION	30.6	42.7	38.0	36.5
MATH	6	TOTAL	76	90.5	88.5	81.3
MATH	6	GENERAL EDUCATION	83.6	94.3	94.1	89.4
MATH	6	SPECIAL EDUCATION	31.4	69.8	56.4	40.2

GOAL #1: STUDENT PERFORMANCE

NJASK 7

			2009-2010	2010-2011	2011-2012	2012-2013
CONTENT	GRADE	DEMOGRAPHIC GROUP	% PROF. & ADV.	% PROF. & ADV.	% PROF. & ADV.	% PROF. & ADV.
LAL	7	TOTAL	84.5	75.3	73.8	78.9
LAL	7	GENERAL EDUCATION	89.2	83.6	80.1	87
LAL	7	SPECIAL EDUCATION	49.4	26.2	36.3	32.7
MATH	7	TOTAL	76.5	76.2	78.1	75.8
MATH	7	GENERAL EDUCATION	82.7	84.1	84.5	83
MATH	7	SPECIAL EDUCATION	29.9	29.3	41.3	32.7

GOAL #1: STUDENT PERFORMANCE

NJASK 8

			2009-2010	2010-2011	2011-2012	2012-2013
CONTENT	GRADE	DEMOGRAPHIC GROUP	% PROF. & ADV.	% PROF. & ADV.	% PROF. & ADV.	% PROF. & ADV.
LAL	8	TOTAL	94.4	94.5	90.4	93.8
LAL	8	GENERAL EDUCATION	98	98.3	95.8	97.7
LAL	8	SPECIAL EDUCATION	71.4	66.3	51.7	70
MATH	8	TOTAL	79.4	87.3	85.7	85.6
MATH	8	GENERAL EDUCATION	87.2	93	92.9	91.4
MATH	8	SPECIAL EDUCATION	27.5	42.6	34.5	48.9

GOAL #1: STUDENT PERFORMANCE

NJASK 8

			2009-2010	2010-2011	2011-2012	2012-2013
CONTENT	GRADE	DEMOGRAPHIC GROUP	% PROF. & ADV.	% PROF. & ADV.	% PROF. & ADV.	% PROF. & ADV.
SCI	8	TOTAL	82.9	94.3	91.8	92.2
SCI	8	GENERAL EDUCATION	89.8	97.5	96.1	96.1
SCI	8	SPECIAL EDUCATION	54.6	68.8	64.4	68.5

GOAL #1: STUDENT PERFORMANCE

HSPA

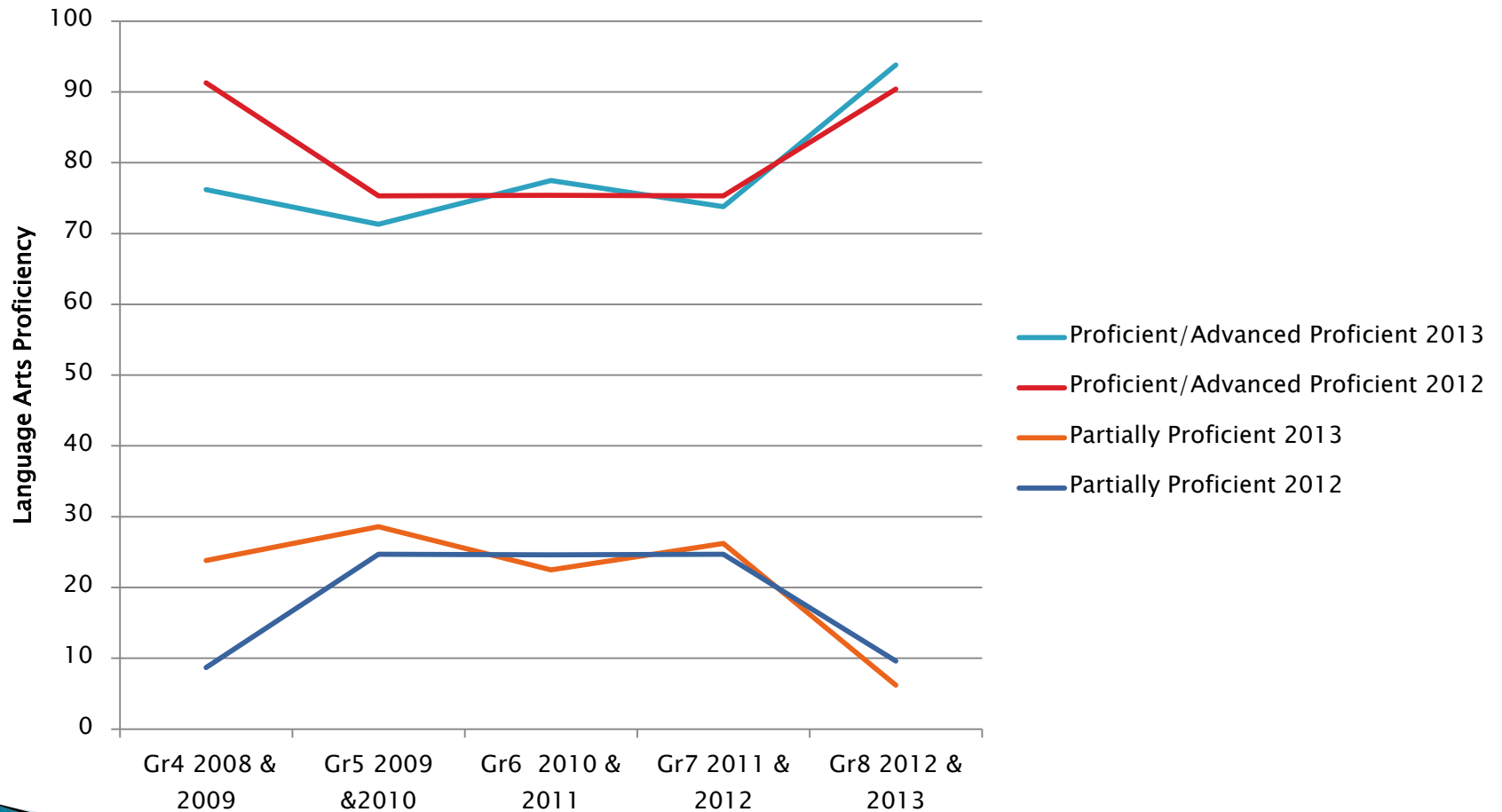
			2009-2010	2010-2011	2011-2012	2012-2013
CONTENT	GRADE	DEMOGRAPHIC GROUP	% PROF. & ADV.	% PROF. & ADV.	% PROF. & ADV.	% PROF. & ADV.
LAL	11	TOTAL	94.4	95.3	96.2	96.1
LAL	11	GENERAL EDUCATION	98.3	99.6	99.3	99.9
LAL	11	SPECIAL EDUCATION	66.7	63.6	72.3	73.4
MATH	11	TOTAL	87.1	88.3	92.2	90.7
MATH	11	GENERAL EDUCATION	93.9	95.6	97	98
MATH	11	SPECIAL EDUCATION	38.3	33.8	56.6	43.6

GOAL #1: STUDENT PERFORMANCE

SAT REASONING SCORES 2013

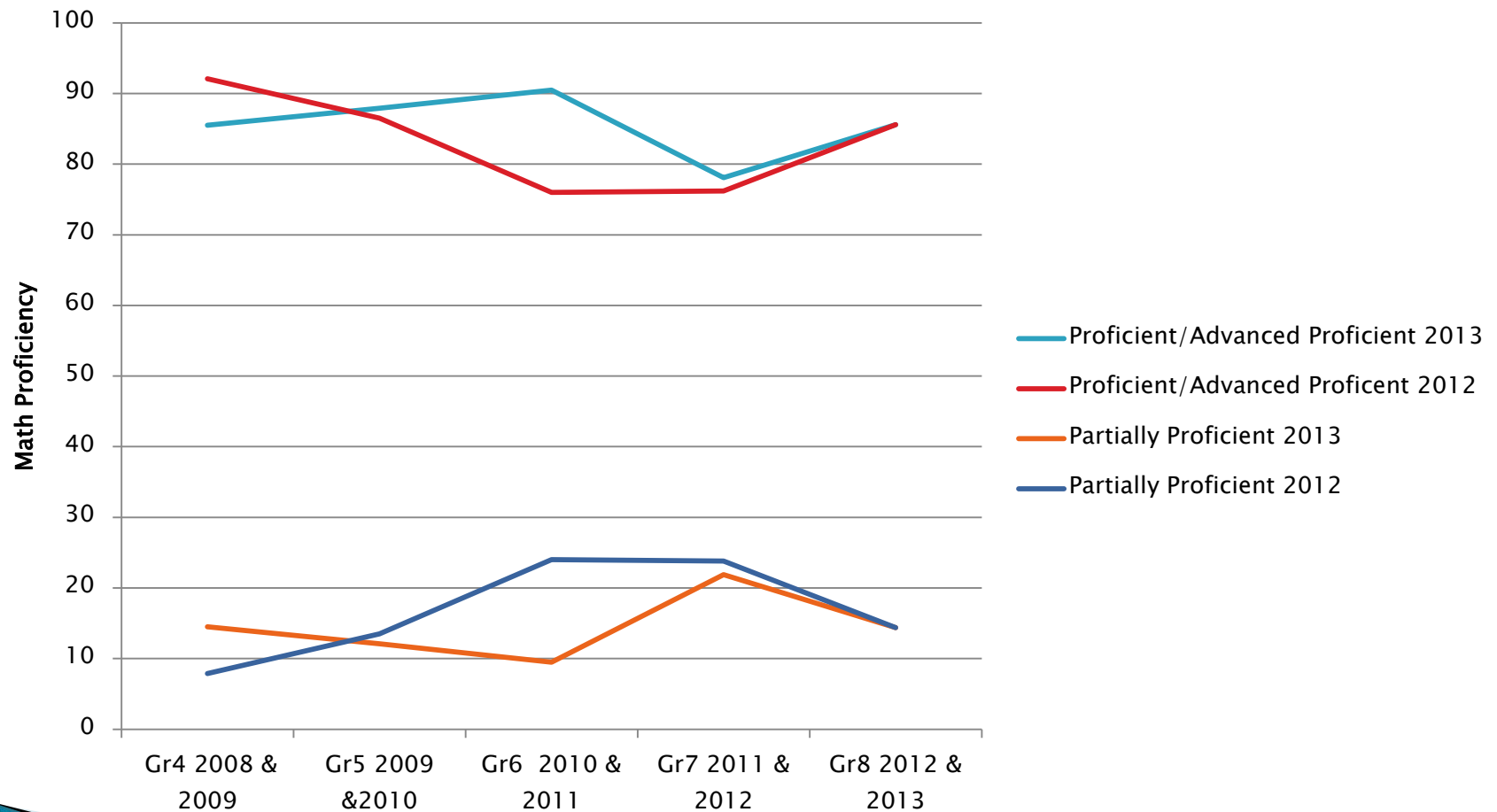
SAT SECTION	WAYNE HILLS TOTAL MEAN 289 STUDENTS	WAYNE VALLEY TOTAL MEAN 338 STUDENTS	NJ TOTAL MEAN	NATIONAL TOTAL MEAN
CRITICAL READING	512	510	499	496
MATH	555	555	522	514
WRITING	522	514	500	488

Language Arts Comparison 2013 class and 2012 class (8th Graders)



Math Comparison

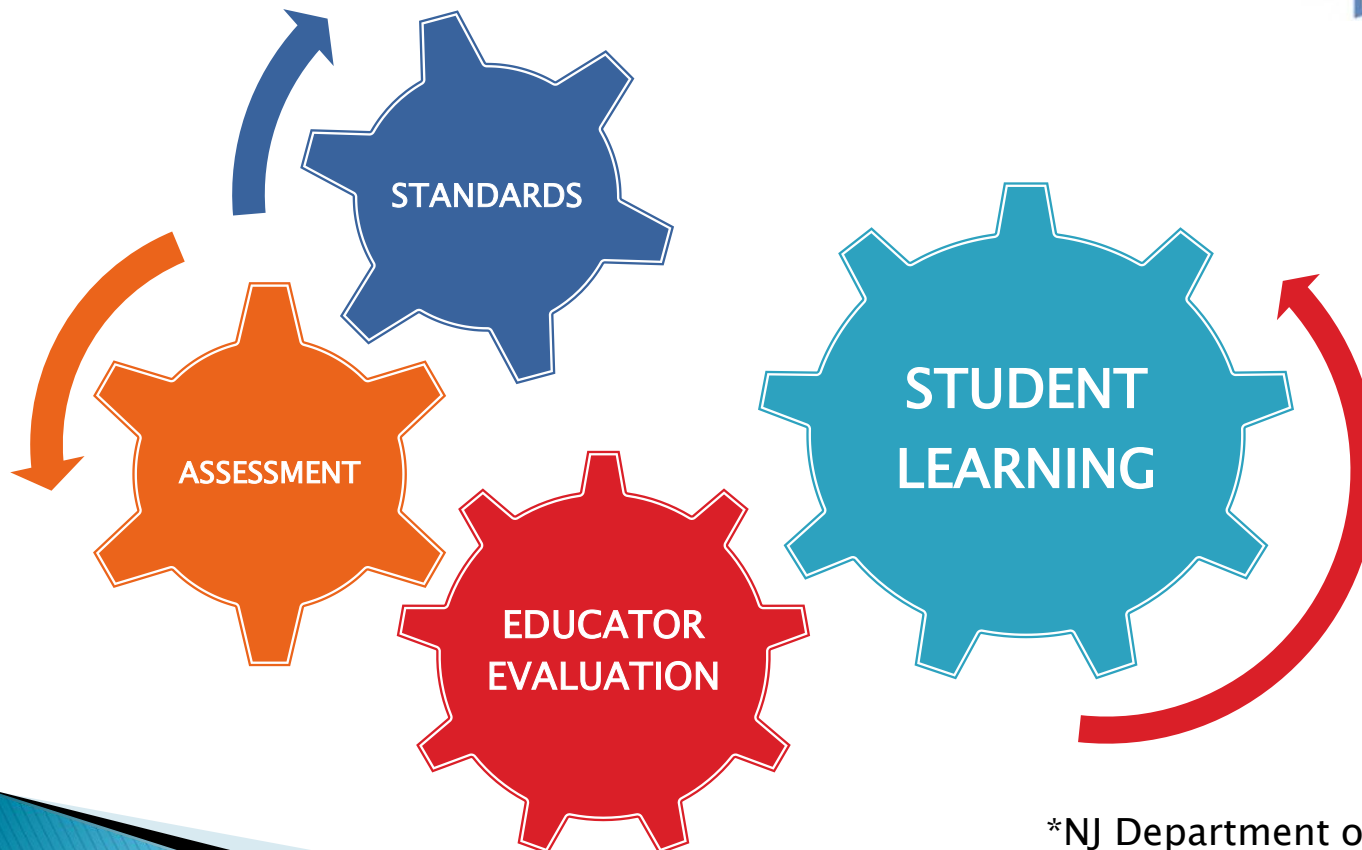
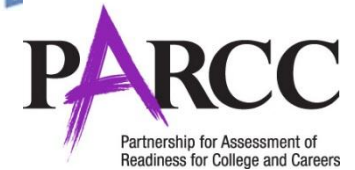
2013 class and 2012 class (8th Graders)





Shifting Gears*

Working together to support student learning!



*NJ Department of Education
<http://www.state.nj.us/education/sca/>

DATA OBSERVATIONS

- ▶ PREPARING FOR THE PARCC
 - INSTRUCTIONAL PRACTICES
 - INCREASED INFUSION OF INSTRUCTIONAL TECHNOLOGY
- ▶ EMPHASIS ON FORMATIVE ASSESSMENTS
- ▶ CURRICULUM ALIGNMENT WITH CCSS
- ▶ FOCUS ON INDIVIDUAL STUDENT GROWTH
 - CONTINUED FOCUS ON ELA & MATH
- ▶ NEW EVALUATION MODEL FOR ALL

RESOURCES

- ❖ Please visit the NJ Department of Education website to view more detailed information.
- ❖ <http://www.state.nj.us/education/assessment/>
- ❖ <http://education.state.nj.us/pr/>
- ❖ <http://www.state.nj.us/education/AchieveNJ/>
- ❖ <http://www.corestandards.org/>

This Presentation will be posted on the District Website

THANK YOU!