

# MID YEAR GOAL REPORT

*mtoback*

## Hitting the Target Mid Year Goal Report

Presented to...  
The Wayne Township  
Board of Education

February 19, 2015

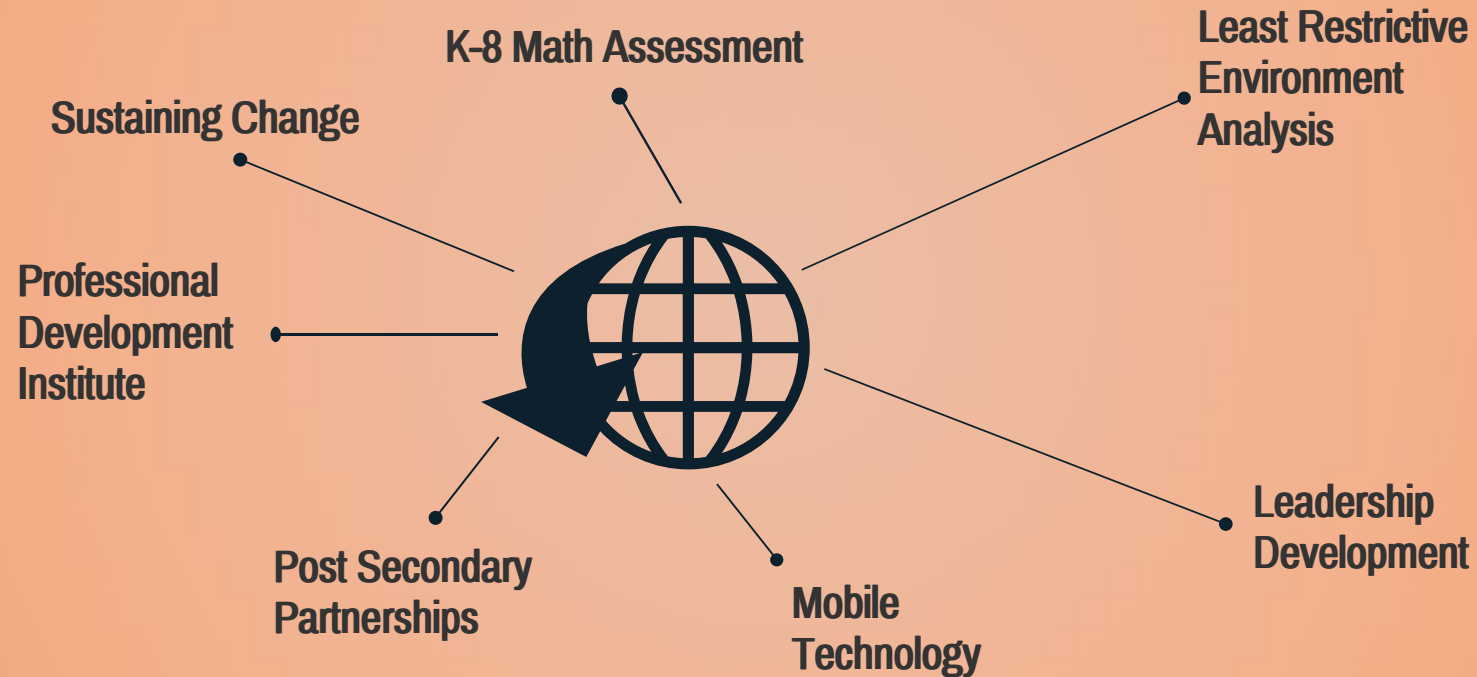


# MID YEAR GOAL REPORT

*mtoback*

## District Goals

BOE Adopted on August 28, 2014



**SLIDE 2**

## How do the goals fit together?

Organizational  
Enhancement

Focus on  
Teaching and  
Learning

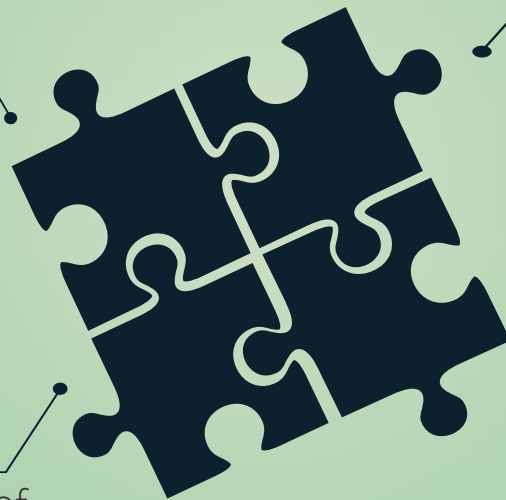
Home Grown

Multiple Sources of  
Input

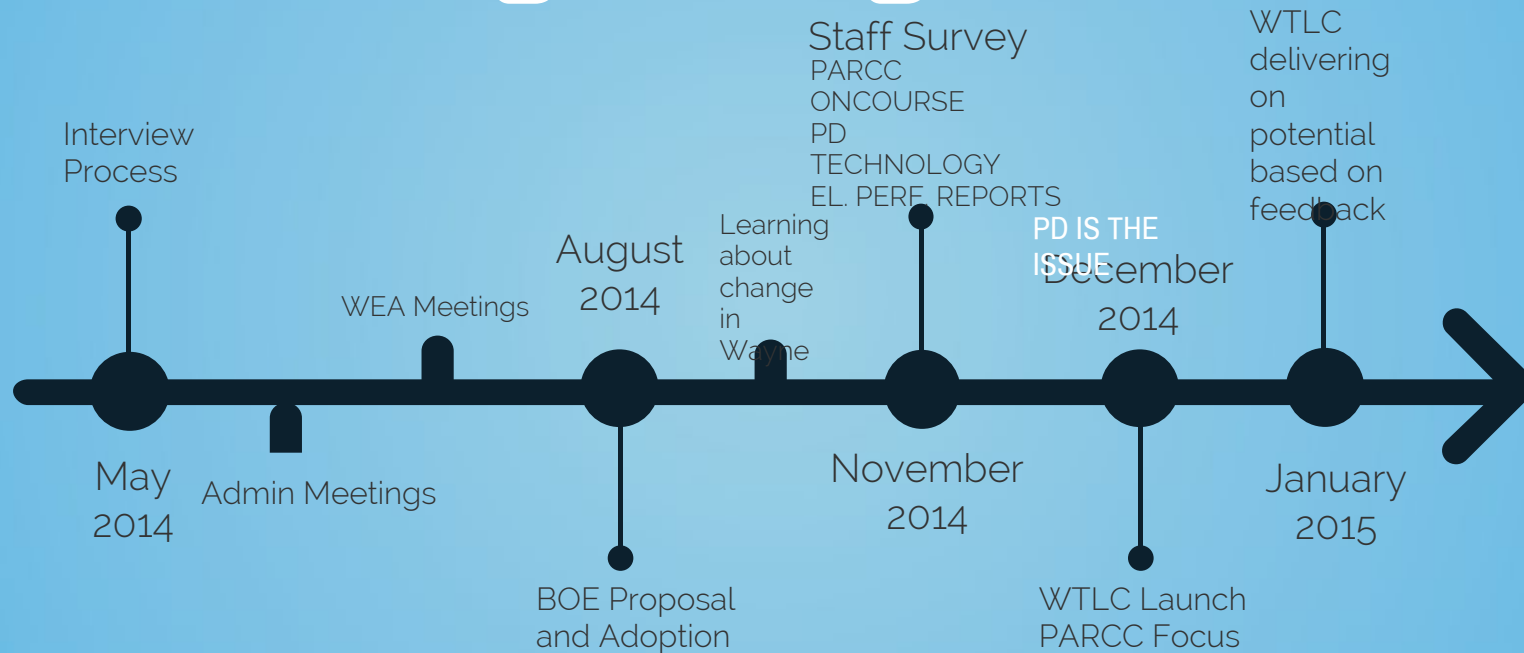
Low Cost (except math)

Opportunity Cost  
Utilitarian

Change is a Process-  
Not an Event



## Sustaining Change



SLIDE 4

## Mobile Technology

Google Analytics... shows that our website is accessed by people from all over the world.

BYOD analysis shows that at any given time during the school day, over 1400 high school students and staff members are using the network.



Mobile access occurs through use of APPS 89% of the time.

Mobile technology use in district parallels the explosion of mobile technology across the world.

The addition of a mobile app makes perfect sense and will be a great aid to the district with efforts to instantly share information while also providing convenience for our network users.

Android Browser is now one of our top browsers used to access the district network.

# MID YEAR GOAL REPORT

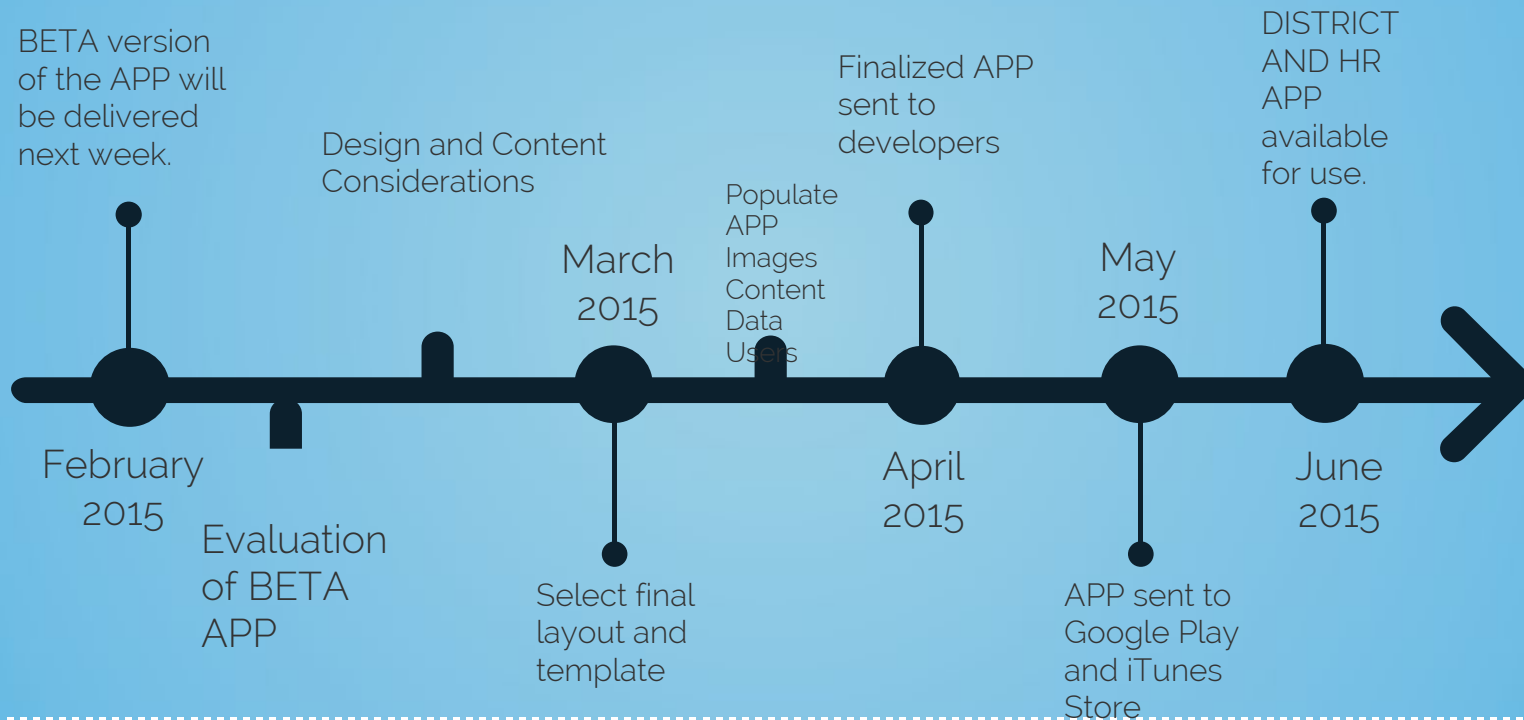
*mtoback*

Compared to the same time period last year, the district experienced a 61.69% increase in the use of mobile technology to access the district network.



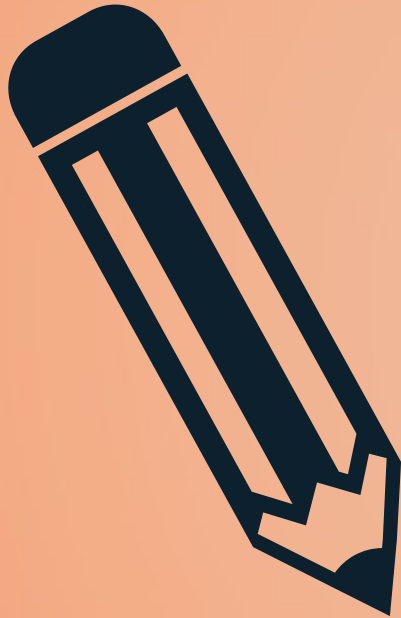
SLIDE 6

## APP Development Timeline



SLIDE 7

## Least Restrictive Environment Analysis

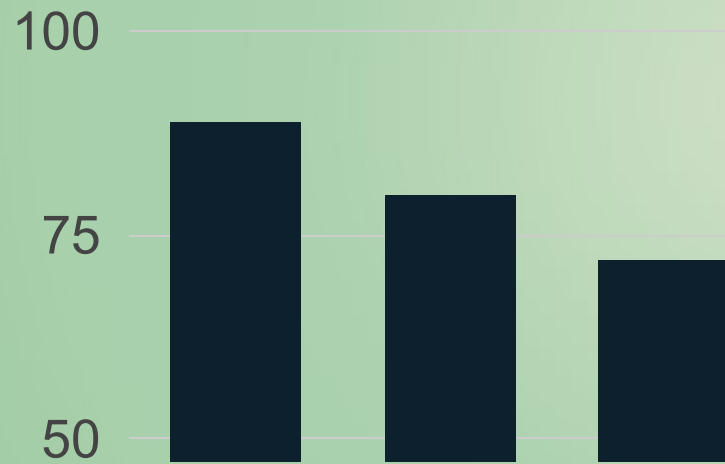


- We can save \$20K-40K No need for a study!
- Lots of EXISTING effort to be recognized
- ABA-Serves over 100 students
- HS Transition Program serves 18 students
- Development of Interventional Reading
- Appropriate Levels of Support Analysis



## Least Restrictive Environment Analysis

Out of District Placements  
Six Year Trend



SOAR-Secondary Options for Academic Recovery starts next week for 3 of 7 eligible home instruction students.



STARS-Students Teaching and Reaching Students-A program to partner special needs students with students in regular academic programs.



Community Based Program for 18-21 Year Old Students (8 Total)



Expanded PK Program-New section serves 3 students

SLIDE 9

## Post Secondary Partnerships



We have met with representatives from local colleges and universities to discuss opportunities for partnership beginning the 2015-2016 school year.



Several meetings were held with key stakeholders, including college representatives, district administrators, guidance counselors and teachers in order to refine areas of focus and determine student interest. A student and parent survey was also completed through Naviance.



We are scheduled to offer two new courses at Wayne Hills High School and Wayne Valley High School which will be recognized as dual enrollment courses by Passaic County Community College: College Business I and College Business II. In addition we are scheduled to offer Accounting I and Accounting II as dual enrollment courses recognized by FDU at both Wayne Hills and Wayne Valley. We are looking to add additional options for students in the near future.



We currently possess an articulation agreement with Passaic County Community College and FDU.



The cost to students through Passaic County Community College will be \$100.00 per course. The estimated cost to students through FDU is \$230.00 per course. A course at FDU costs about \$3,800 on campus or \$230 at a Wayne high school representing a savings of about \$3,570 per class.

## Leadership Development

Turnover in leadership can present a challenge in any organization. Organizations can proactively develop solutions by developing a group of qualified in-house leaders by creating active leadership mentoring programs available to qualified candidates.



The district promoted a number of district employees to leadership positions.



During the fall, the district developed a TEACHING ASSISTANT PRINCIPAL PROGRAM (TAP).  
(Goal Complete)



Deadline to apply to program is June 30, 2015.

## Seven Future Goals

### Possible Directions for the Future

1. Making Sense of the PARCC in Wayne

Correlate PARCC Performance/NJASK Performance/SAT Performance/AP performance with assigned grades.

2. Six Year Capital Plan

We are on our own (NO SDA) and that has budget implications. The district cannot afford any surprises.

3. Evaluate Elementary Performance Reports

We have had two years with a new reporting system and it may benefit the district to reflect on this change.

4. Language Arts Program Evaluation

The district completed a successful math program eval. and a similar process for language arts may be of great benefit.

5. Student Challenge Initiative

Seek ways to increase our overall enrollment in advanced placement courses.

6. Fluid Deployment of New Math Program (Training for Teachers and Parents)

7. Explore High School and Middle School Scheduling Configurations

---

# MID YEAR GOAL REPORT

*mtoback*



**SLIDE 13**