

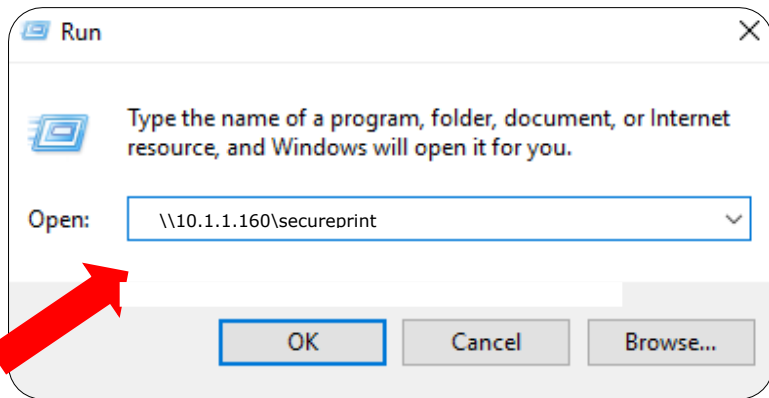


Follow Me Print Installation Directions

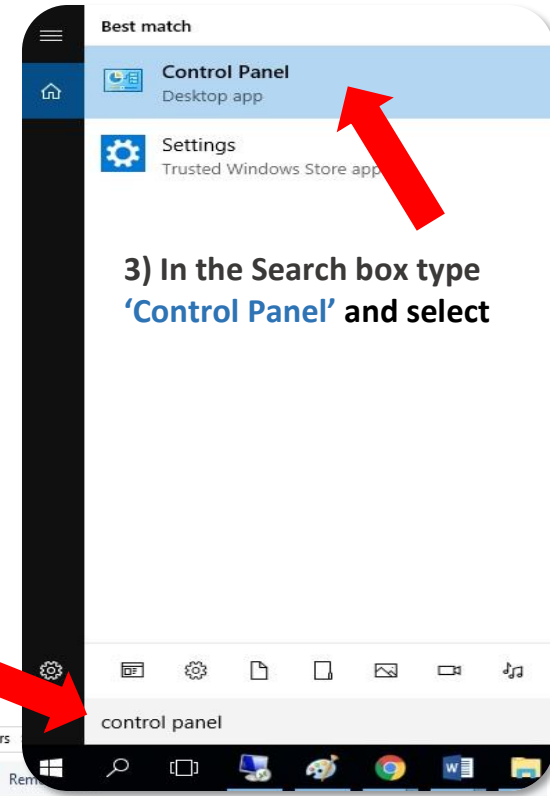


1) Click the Windows button and the 'R' key on your computer keyboard.

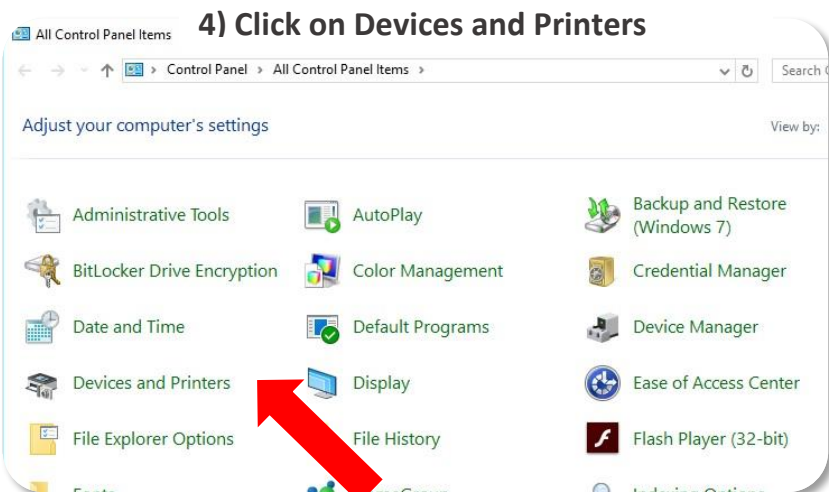
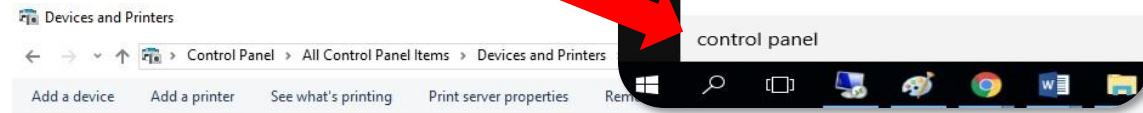
In the tab that opens, type [\\10.1.1.160\secureprint](http://10.1.1.160/secureprint) in the run box and the drive install will launch.



2) Click the search button on your taskbar on the bottom of your computer screen



3) In the Search box type 'Control Panel' and select



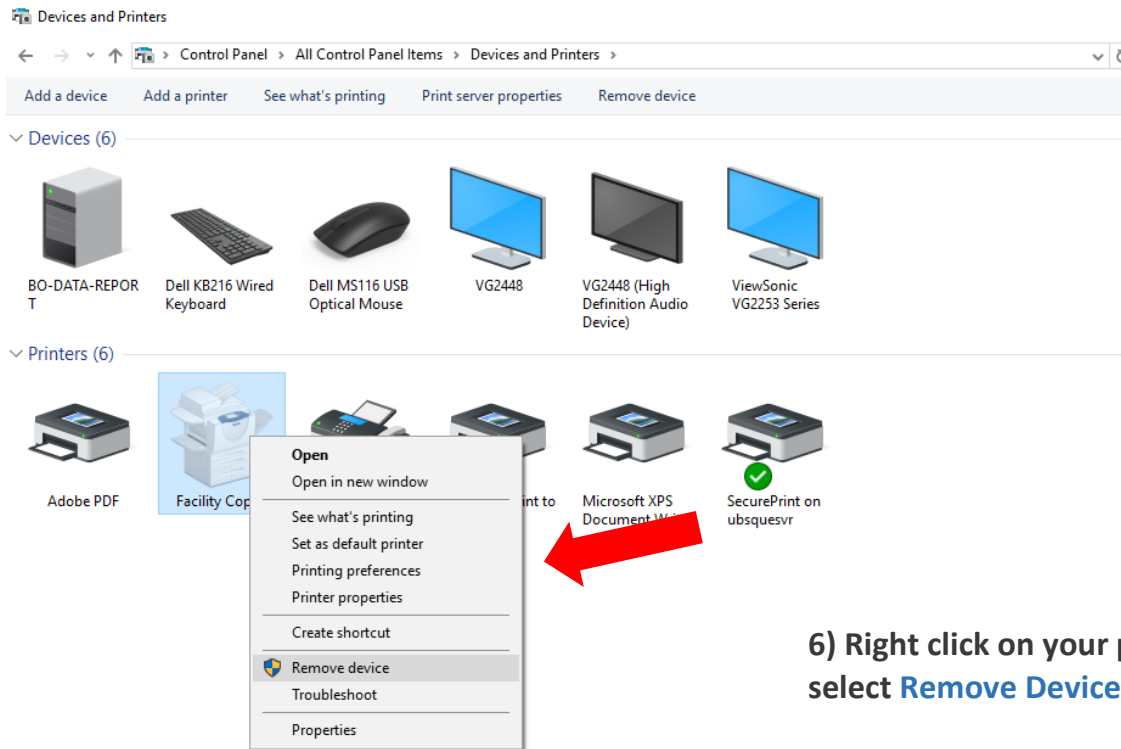
4) Click on Devices and Printers



5) Right click on the **SecurePrint on ubsqvescr** and select **Set as default printer**

Delete your Previous Printer

Follow Above Steps 2 to 4



6) Right click on your previous printer(s) and select **Remove Device**